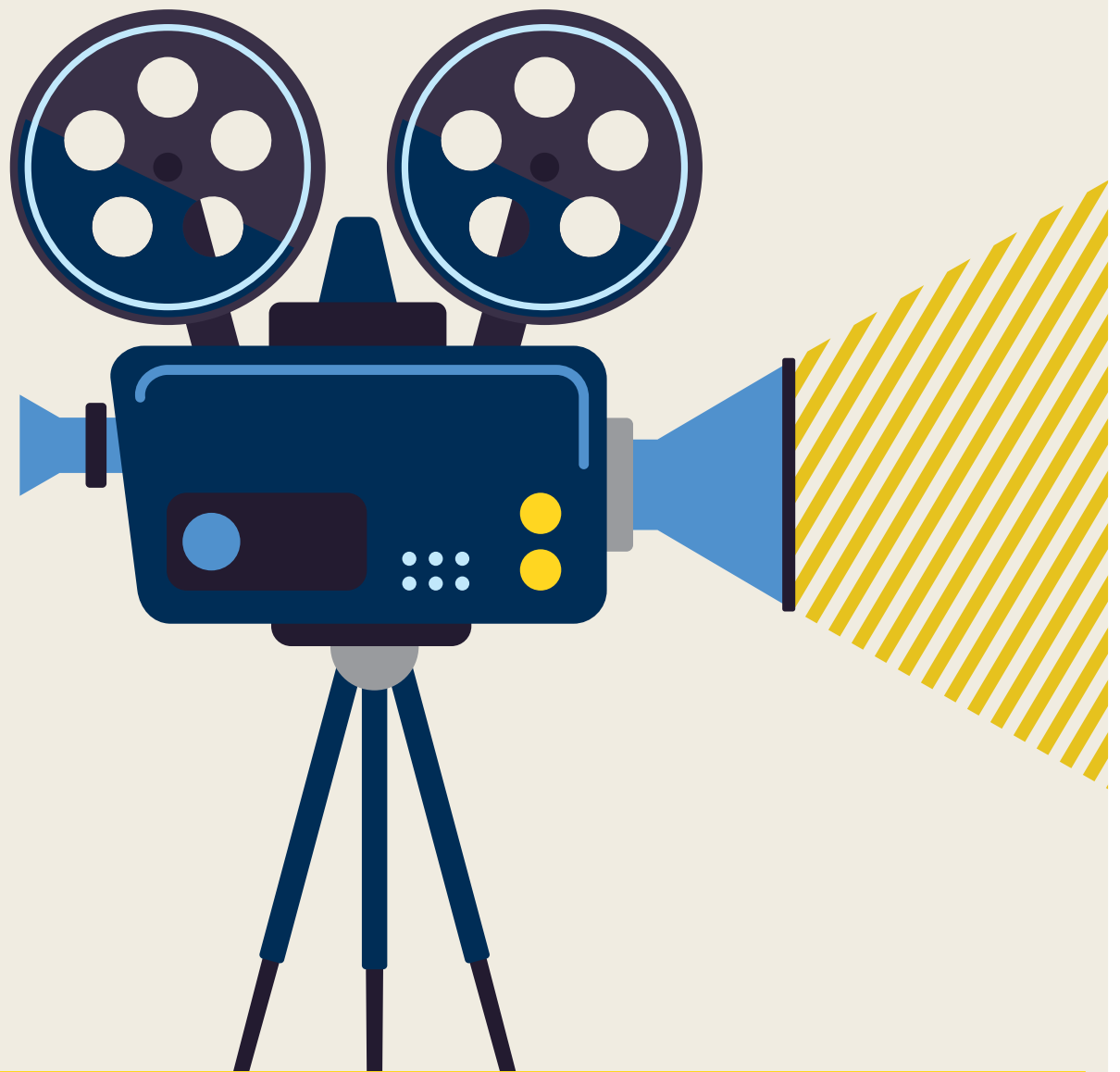


AN INSTITUTE FOR SOCIAL POLICY  
AND UNDERSTANDING PRODUCTION...

# LIGHTS, CAMERA, ACTION



TRANSFORMING CULTURE  
THROUGH RESEARCH



**ISPU ANNUAL BANQUET 2021**

SATURDAY, OCTOBER 2, 8–9:30PM E.T.  
HOSTED ON ZOOM



## EVENT DETAILS

 **ONLINE**  
via Zoom

 **OCTOBER 2**  
8:00–9:30 P.M. ET  
5:00–6:30 P.M. PT

## EVENT EMCEE



**RIZWAN MANJI**

*Schitt's Creek*  
*The Tiger Hunter*

# ISPU ANNUAL BANQUET LIGHTS, CAMERA, ACTION



**WHEN WE ENVISIONED** our 2021 Annual Banquet, we were drawn to themes of celebration and entertainment. We want to *celebrate* ISPU's accomplishments and those who make success possible. We seek *entertainment*, something we could all use a bit more of as we move closer to the end of a tumultuous year and a half. As a result, it seemed only natural that our banquet theme this year would be: **Lights, Camera, Action: Transforming Culture Through Research.**

We know that research informs the how culture entertains and educates communities across the nation, and we're thrilled that this virtual evening together will showcase the power of research to transform culture to be more inclusive, where people of all backgrounds have a chance to tell their story on their terms.

ISPU's 2021 Annual Banquet will feature **Lena Khan**, director and co-writer of the 2018 film *The Tiger Hunter*, as our keynote speaker, and *The Tiger Hunter* and *Schitt's Creek* actor **Rizwan Manji** as the banquet emcee. We hope you'll join and support us during the evening as we entertain each other through the joy of being in community, and as we are entertained by the banquet speakers and many friends of ISPU.

Of course, none of this could happen without the people who power our research. Our generous donors make it possible for ISPU's work to reach individuals, communities, and industries all over the country. We hope you'll consider sponsoring a virtual table at the banquet, and therefore, help us produce relevant, rigorous research for years to come. By sponsoring the banquet, you will access visibility to:

- 13,000+ individuals in banquet-specific marketing emails
- 15,000+ Facebook followers, 5,800+ Twitter followers, 2,000+ Instagram followers, and more, in banquet-specific marketing posts



**Keynote Speaker**

**LENA KHAN**

**Director, *The Tiger Hunter***



# SPONSORSHIP LEVELS



## COMMUNITY SPONSOR \$500

1 complimentary ticket (for 1 household screen) to the virtual banquet  
Digital advertisement on online event page night of banquet  
Sponsor spotlights on social media in weeks preceding banquet  
Inclusion in virtual exhibition hall

## SCHOLAR SPONSOR \$1,500

## RESEARCH SPONSOR \$2,500

## BENEFACTOR SPONSOR \$5,000

## PARTNER SPONSOR \$10,000

### All perks of Community Sponsor +

Your own scholar's table & 10 complimentary tickets to the banquet

Inclusion in "Thank You to Our Sponsors" banquet video

### All perks of Scholar Sponsor +

Your support will be acknowledged in our American Muslim Poll publication

Name recognition in all event publicity

Access to the private ISPU sponsors' virtual event (Sunday brunch)

### All perks of Research Sponsor +

Placement of corporate logo in all event publicity

Special ISPU Gift Box mailed to you

### All perks of Benefactor Sponsor +

Prominent placement of corporate logo in all ISPU banquet events

Video advertisement during banquet

Verbal recognition and thank you from ISPU staff during banquet



**Spin the Wheel-of-Research:** Enjoy this year's interactive perk for **Scholar Sponsors and above**, a virtual "table" with 10 guests and your very own ISPU scholar! Ask them your questions and have fun as a group in the half hour before our main event begins.

## FOR MORE INFORMATION:

**Michelle Gale**  
(630) 624-2654  
events@ispu.org

VISIT [ISPU.ORG/BANQUET](https://www.ispu.org/banquet) TO PURCHASE YOUR SPONSORSHIP



**THE INSTITUTE FOR SOCIAL POLICY AND UNDERSTANDING (ISPU)** provides objective research and education about American Muslims to support well-informed dialogue and decision-making.

Contributions to ISPU, a 501(c)(3) tax-exempt charity, are tax-deductible to the extent permitted by law. ISPU's tax EIN is 38-3633581.  
Contributions to ISPU are also zakat-eligible.